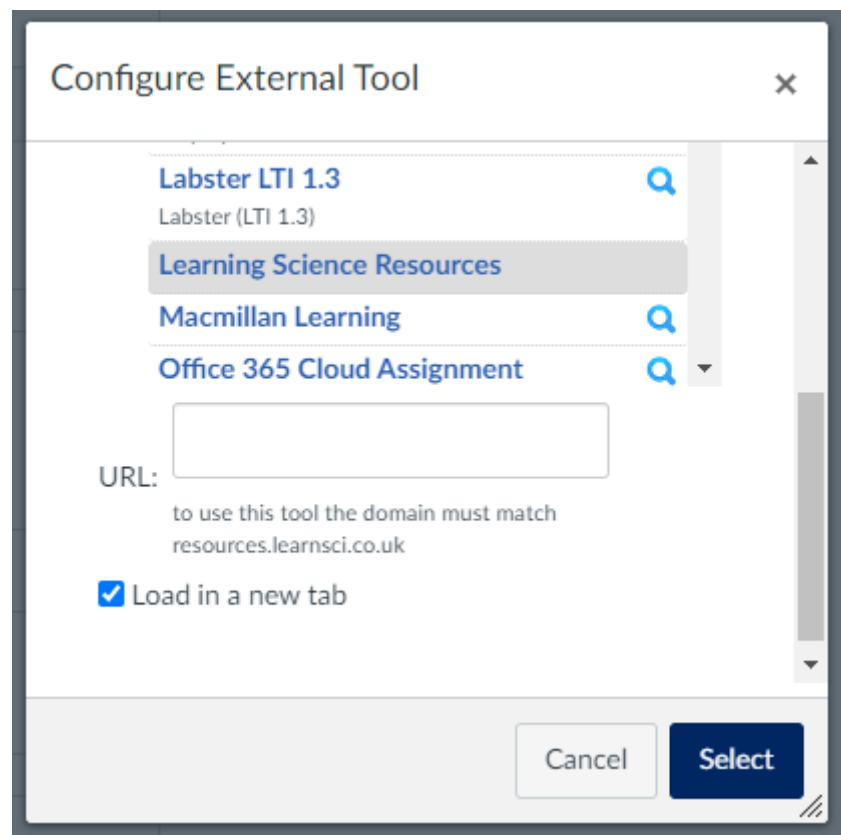


Canvas: How to add a Smart Worksheet at LJMU

Advice from the LearnSci website follows but there are three pieces of important information that you need before proceeding.

1) LearnSci 'Grade Sync' has already been enabled and so there is no need to check this. This is the name of the functionality that transfers marks from the Worksheet to Canvas Grades.

2) You will read that the LearnSci advice acknowledges that the 'Configure External Tool' interface may look different to that shown. It does, and it looks like this at LJMU:



Make sure that you highlight Learning Science Resources, as shown, before pasting in the URL.

3) The URL that you need to copy and paste depends on your chosen Smart Worksheet:

Name	URL
Scientific Numeracy	https://resources.learnsci.co.uk/enrol/lti/tool.php?id=37022
Statistics: Standard Deviation	https://resources.learnsci.co.uk/enrol/lti/tool.php?id=37046

Here is the LearnSci advice: <https://support.learningscience.co.uk/portal/en/kb/articles/how-do-add-a-grade-synced-learnsci-labsim-or-smart-worksheet-in-canvas>