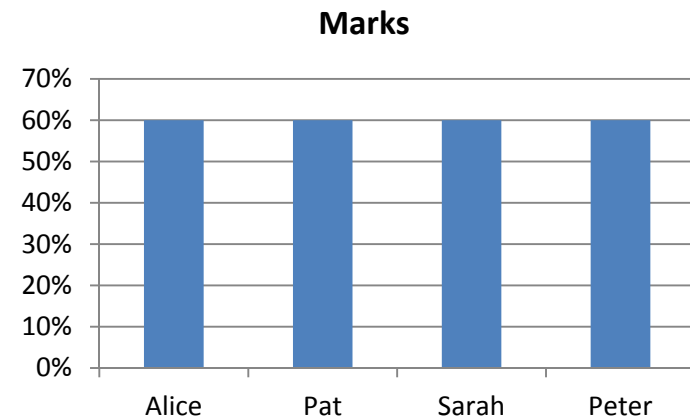




WebPA How Does it Work Elaine Hemers

Advantages and Disadvantages of Group Work

- Advantages
 - Graduate transferable skill
 - Contribute to learning and retention
- Disadvantages
 - Unequal contribution to work may not be taken into account in the marking



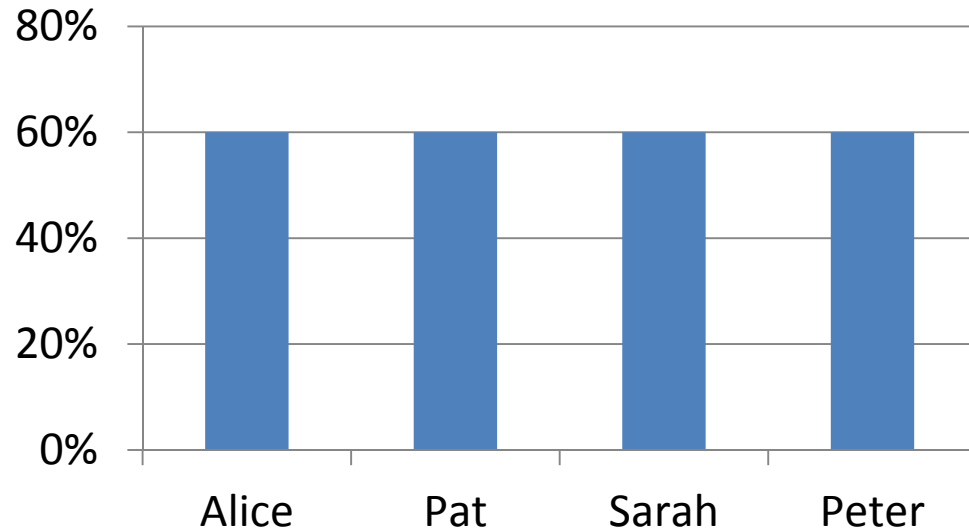
- Often reflected in module appraisal comments

Caruso, H.M., & Wooley, A.W. (2008). Harnessing the power of emergent interdependence to promote diverse team collaboration. *Diversity and Groups*, 11, 245-266.

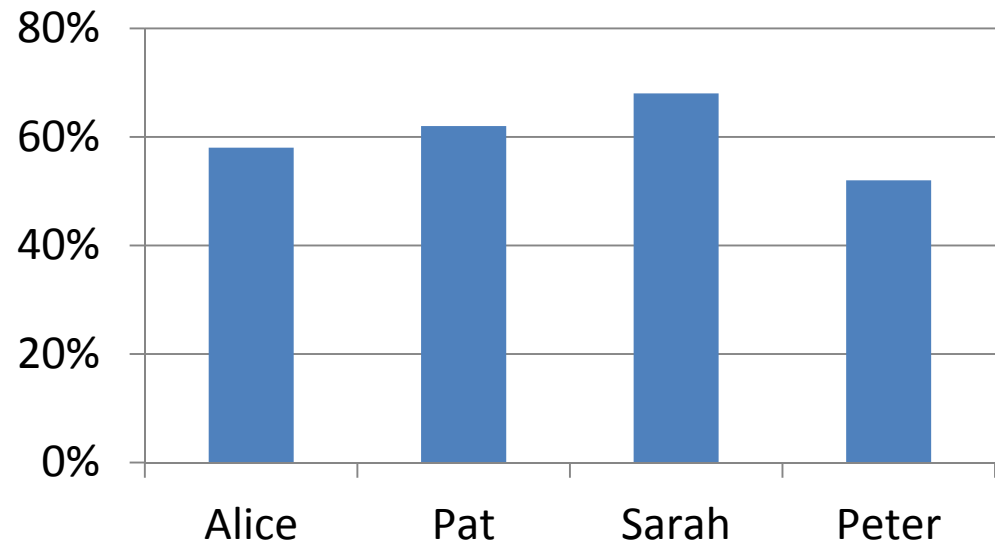
Mannix, E., & Neale, M.A. (2005). What differences make a difference? The promise and reality of diverse teams in organizations. *Psychological Science in the Public Interest*, 6(2), 31-55.

Taking into Account Individual Contribution

Marks



Marks



- Students
 - home
 - my groups
 - my assessments
- Support
 - help
 - contact
- logout


Technical Problem?
If you have a problem, find a bug or discover a technical problem in the system, [contact us](#) to report it!

WebPA OS

Welcome to Web-PA, the easiest way for you to complete your peer assessment on the web.

Below is a list of the assessments you can take now.
To view all the assessments you are registered on, please check the [my assessments](#) section.

Open Assessments

 **Learning Technology 101** Take Assessment

scheduled: Mon, 8th July, 2013 at 9:00 - Sun, 21st July, 2013 at 17:00

Getting Help

You will need to seek help from your tutor.



Students

- home
- my groups
- my assessments

Support

- help
- contact
- logout

Technical Problem?

If you have a problem, find a bug or discover a technical problem in the system, [contact us](#) to report it!

WebPA OS Learning Technology 101

[back to assessments list](#)

Taking This Assessment

Please complete the assessment below. For each question *you must give a Score(s) to each group member*, including yourself.

To save your Score(s), you must click the *Save Score(s)* button. Once you have successfully submitted your responses you cannot go back and change your Score(s).

To leave this assessment without saving, click the *back to assessments list* link above, or choosing an option from the menu.

Score(s) Your Team

For each criterion you must rate your teammates using the scale provided. High scores indicate better performance in the criteria.

Introduction

This is your peer assessment activity. Please login and rate your peers

Assessment Criteria

1. Rate each person's ability at searching for information?

- Score 1 : Made no effort beyond a simple internet keyword search
- Score 3 : Made an average contribution in this respect
- Score 5 : Searched a wide variety of sources tenaciously and with success

	1	2	3	4	5
Reid, Bethan	<input type="radio"/>	<input type="radio"/>	<input type="radio"/>	<input type="radio"/>	<input type="radio"/>
Spiers, Alex	<input type="radio"/>	<input type="radio"/>	<input type="radio"/>	<input type="radio"/>	<input type="radio"/>

2. Rate each person's ability to generate ideas and concepts?

- Score 1 : Contributed no useful original ideas
- Score 3 : Made an average contribution in this respect
- Score 5 : Generated a wealth of realistic ideas and design concepts throughout

Assessment Criteria

1. Rate each person's ability at searching for information?

Score 1 : Made no effort beyond a simple internet keyword search
Score 3 : Made an average contribution in this respect
Score 5 : Searched a wide variety of sources tenaciously and with success

	1	2	3	4	5
Reid, Bethan	<input type="radio"/>	<input checked="" type="radio"/>	<input type="radio"/>	<input type="radio"/>	<input type="radio"/>
Spiers, Alex	<input type="radio"/>	<input type="radio"/>	<input type="radio"/>	<input checked="" type="radio"/>	<input type="radio"/>

2. Rate each person's ability to generate ideas and concepts?

Score 1 : Contributed no useful original ideas
Score 3 : Made an average contribution in this respect
Score 5 : Generated a wealth of realistic ideas and design concepts throughout

	1	2	3	4	5
Reid, Bethan	<input type="radio"/>	<input type="radio"/>	<input type="radio"/>	<input checked="" type="radio"/>	<input type="radio"/>
Spiers, Alex	<input type="radio"/>	<input checked="" type="radio"/>	<input type="radio"/>	<input type="radio"/>	<input type="radio"/>

Justify your feedback

This section of the assessment is for you to provide general feedback and justification of the scores you have awarded in the section above.

Reid, Bethan	<input type="text"/>
Spiers, Alex	<input type="text"/>

That concludes this peer assessment. To finish and submit your response click the *save Score(s)* button below.

Once you have successfully submitted your responses you cannot go back and change your Score(s).

save Score(s)

General Info

- You can give marks only once please answer all the criteria
- Once completed you will receive an on screen confirmation
- Logon to WebPA (<https://webpa.ljmu.ac.uk>)
- You should have received an email with the link this morning

You Can See Who Has Not Responded

12

name	email	responded
Names and emails removed		✓
Names and emails removed		✓
Names and emails removed		✓
Names and emails removed		✓

13

name	email	responded
Names and emails removed		✓
Names and emails removed		✓
Names and emails removed		✗

Logon to Open Assessments and Email Students

WebPA OS my assessments

Use the tabs below to manage your different categories of assessment.

You can also [create a new assessment](#)

Pending

Open

Closed

Marked

Academic year to display 2016/17

Open assessments for 2016/17

These assessments are now open and available for students to take.



Physiology Presentations

scheduled: Tue, 6th December, 2016 at 17:00 - Tue, 13th December, 2016 at 17:00

student responses: 57 / 58



Logon to Open Assessments and Email Students

WebPA OS email your students

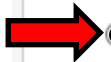
This wizard takes you through the process of sending an email to the students taking this assessment.

You are on **step 1** of **3** in the email your students wizard.

To begin, you need to select exactly which students should receive your email.

Send Email To

- everyone taking this assessment
- selected groups taking this assessment
- students who HAVE responded
- students who HAVE NOT responded



Cancel

Next >

Logon to Open Assessments and Email Students

WebPA OS email your students

This wizard takes you through the process of sending an email to the students taking this assessment.

You are on **step 2** of **3** in the email your students wizard.

You have opted to send this email to *any students who HAVE NOT responded*.

This email will be sent to the 1 students who have not yet taken this assessment.

Email Details

Subject WebPA Final Reminder

Text

Dear Vincent,

This is your final reminder to complete your WebPA assessment for the Physiology Presentations.

The details are as below;

Assessment Name: Physiology Presentations Open from:

< Back

Cancel

Next >

Once Assessment Closed: Set Marks for Each Group

WebPA OS set group marks

On this page you can enter the overall marks each group has achieved. the final student marks.

[← back to assessment list](#)

Group Marks

This assessment is using collection: *group2*

Group	Members	Group Mark
#N/A	-	<input type="text" value="0"/> %
1	Student names removed	<input type="text" value="75"/> %
10	Student names removed	<input type="text" value="80"/> %
11	Student names removed	<input type="text" value="65"/> %
12	Student names removed	<input type="text" value="79"/> %

Setting Percentage Parameters

create mark sheet

On this page you can setup the parameters for the WebPA scoring algorithm.

You can repeat this process many times, creating several mark sheets for the same assessment but using different parameters.

[← back to assessment list](#)

Algorithm Parameters

Enter the parameters to use below. When you've made your changes, click the *create mark sheet* button.

What percentage of the group's total mark should be peer-assessed?

PA Weighting

If a student has not submitted any marks for the assessment, how much should they be penalised?

Penalty for non-completion of their final grade.

create mark sheet

Ad

Viewing Reports

WebPA OS my assessments

Use the tabs below to manage your different categories of assessment.

You can also [create a new assessment](#)

Pending

Open

Closed

Marked

Academic year to display 2016/17

Marked assessments for 2016/17

These assessments are both closed and have been marked to produce student grades.



Physiology Presentations

scheduled: Tue, 6th December, 2016 at 17:00 - Tue, 13th December, 2016 at 17:00

student responses: 57 / 58



Mark Sheet

Algorithm: webpa.

PA weighting: 40%

Non-completion penalty: 5%

Grading: Numeric (%)

[View Reports](#)

Mark Sheet

Algorithm: webpa.

PA weighting: 50%

Non-completion penalty: 5%

Grading: Numeric (%)

[View Reports](#)

Reports

Choose a report

Please select a report to display or download from the list below.

Marks Awarded For Each Question

A breakdown of the marks given by each student for every question in the assessment.

View Report: Download:



Marks Awarded For Each Question (anonymous)

A breakdown of the marks given by each student for every question in the assessment. Student names/numbers are **NOT** displayed.

View Report: Download:



Student Response Information

Shows the date, time and location that each student took the assessment.

View Report: Download:



Student Grades

A list of students (by lastname) and their final WebPA scores and grades.

View Report: Download: Download: Download:



Student Grades (by group)

A list of students (by group) and their final WebPA scores and grades.

View Report: Download: Download: Download:



Student Feedback and Justification (by group)

A list of students (by group) and their feedback about the assessment and justification of the WebPA scores and grades.

View Report: Download:



Student Grades and Feedback

This report can be used to upload WebPA assessment marks into the grade book. Comments are not currently supported for upload. If you would like the comments emailed to your students please contact your WebPA administrator.

Download:



Report: Student Grades by Group

	A	B	C	D	E	F
1	Student Grades (by group)					
2						
3	Group	1				
4	Overall group mark	75				
5	Name	WebPA score	Intermediate Grade	Non-Submission Penalty	Final Grade	
6	Names removed	1	75.00%		75.00%	
7		1	75.00%		75.00%	
8		1	75.00%		75.00%	
9		1	75.00%		75.00%	
10						
11						
12	Group	10				
13	Overall group mark	80				
14	Name	WebPA score	Intermediate Grade	Non-Submission Penalty	Final Grade	
15	Names removed	0.88	75.21%		75.21%	
16		1.04	81.42%		81.42%	
17		1.04	81.45%		81.45%	
18		1.05	81.91%		81.91%	
19						
20						
21	Group	11				
22	Overall group mark	65				
23	Name	WebPA score	Intermediate Grade	Non-Submission Penalty	Final Grade	
24	Names removed	0.43	46.32%		46.32%	
25		1.24	72.68%		72.68%	
26		1.22	72.31%		72.31%	
27		1.11	68.69%		68.69%	
28						
29						

Concluding Thoughts

- Simple to use
- Questions can be reused the following year
- Encourages group members to contribute
- Good feedback from students (83% agree; 13% neutral)
- Reduced the negative comments on Module Appraisals More information from Jim Turner and at Webpa.ac.uk